



Télécom Paris



Double degree in Engineering
Exchange possibilities

Innovating in a digital world





Outline



- [Why choose Télécom Paris?](#)
- [Double Degree in Engineering](#)
- [Exchange Programs](#)
- [Admissions](#)
- [Fees](#)
- [Scholarships](#)
- [Accommodation](#)
- [Campus Life](#)





Why choose Télécom Paris?

The Leading French Engineering School in Digital Technologies



The Leading French Engineering School in Digital Technologies



■ International rankings

- 2nd ranked French engineering school – T.H.E. 2020
- 2nd (France) & 112th (world) for graduate employment rate – QS 2020
- 6th World's Best Small Universities – T.H.E. 2020
- 188th in T.H.E. world university ranking - 2020
- QS world university ranking by subject - 2021
 - 64th in QS Computer Sc. & Information Systems ranking
 - 218th in QS Electrical & Electronic Engineering ranking
 - 301-350 group in QS Mathematics ranking
- 1st French University – Multirank 2020

■ French rankings

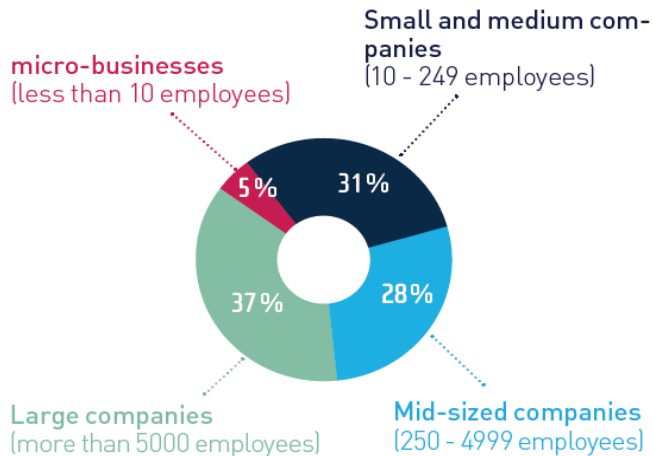
- 1st School in Digital Technology (Le Figaro 2020)
- 2nd French engineering School (L'Etudiant 2021)
- 1st in internationalization (L'Etudiant 2021)
- 1st in proximity with companies (L'Etudiant 2021)



Excellent Employment Prospects

97% of graduates are employed **within 3 months** of graduation.

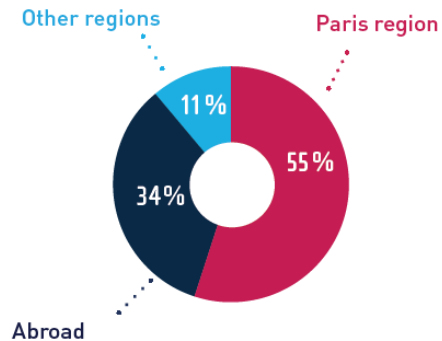
COMPANY SIZE



GOVERNMENT, LOCAL AUTHORITIES AND HOSPITALS
(excluding teaching & research)

DIGITAL TECHNOLOGIES AND INNOVATION CONSULTING

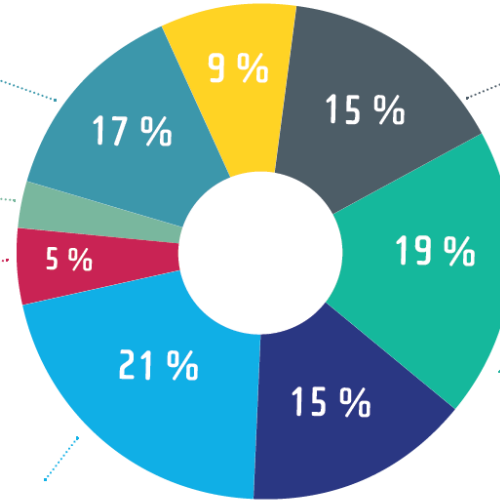
LOCATION



STRATEGY CONSULTING AND OPERATIONS

BANKING AND INSURANCE

OTHER : 3 %



HIGH-LEVEL SERVICES
(education, health, commerce, tourism)

Teaching, research, health and social work: 11 %
Marketing, trade, tourism: 3 %

DIGITAL SERVICES AND SOFTWARE

Software development: 10 %
Data processing and hosting: 4 %
Telecommunication : 4 %
Internet and web portals: 3 %
Publishing, audiovisual and distribution: 2 %

MANUFACTURING INDUSTRIES
(aeronautics, transport, IT)



47,950 €
Average annual gross salary with bonuses

Source: 2020 1st Job Survey of the last 3 graduating classes

Corporate Relations

■ Governance

- Representatives on Boards, working groups, etc.

■ Instruction

- > 500 guest speakers from companies
- 100 joint events (Campus Recruitment Forum, company visits, "A day in the life" field visits, Round Tables, case studies, conferences, challenges, etc.)
- Internships and study projects

■ Research

- 25 Teaching and Research chairs or Joint Laboratories
- Experimental case studies

■ Entrepreneurship

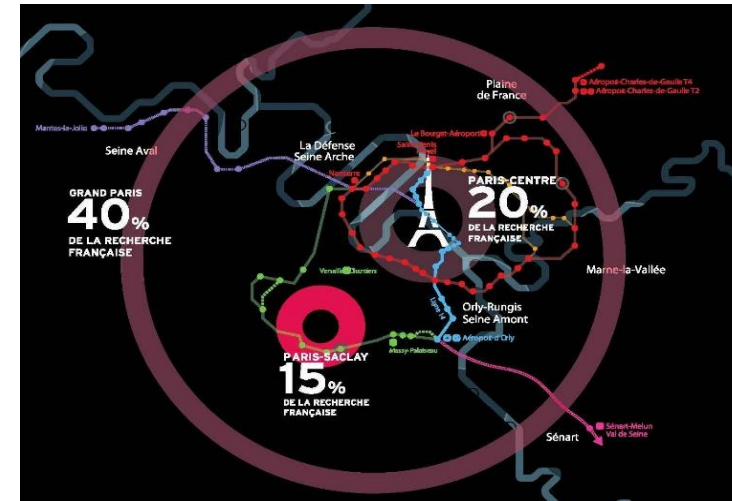
- 1st academic public incubator:
 - 450 sustainable companies launched in 20 years
 - 3,000 jobs created (s. 1999) - 3 new startups per month –
 - 85% companies in business after 5 years - 20 patents per year



A campus in the Leading Economic Region in Europe

The Paris region:

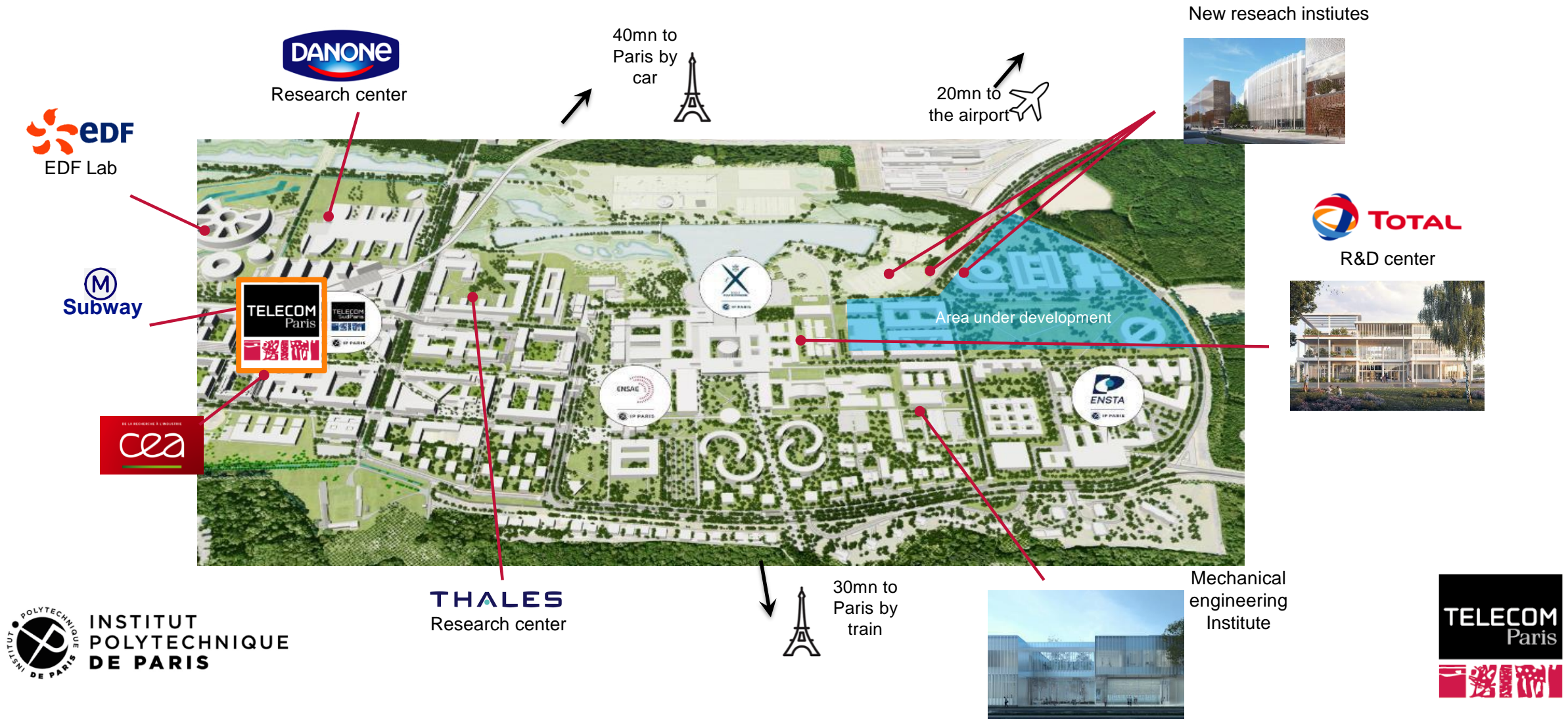
- 4.6% of total EU GDP – 669 B€
- 678,000 students – 75,000 intern. students
- > 1M companies
- 1st EU region for R&D and innovation
- 162,000 researchers and R&D engineers
- > 50% of French startups



Plateau de Saclay campus:

- 40% of public and private research in the Paris region
- 15% of French research
- One of the top 8 innovation clusters in the world (MIT 2013)
- 45,000 R&D jobs
- 15,000 researchers – 360 labs
- 65,000 students
- 20 km south of Paris

A Campus in a Scientific & Research Ecosystem



A Founding Member of Institut Polytechnique de Paris



- **8,500 students in 2020**
 - 95% of students find a job in less than 4 months after graduation
 - 900 PhD students
 - 230 post-doctoral students
- **1,000 permanent research-professors**
- **30 laboratories**
- **2 interdisciplinary centers**
 - E4C - Center of Energy for Climate
 - Hi Paris! - Center of Artificial Intelligence & Data Analysis

Degrees:

- *Masters*
- *PhD*
- *PhD-tracks*

High-level Scientific Research

- **Reference Center in Europe** for Pluridisciplinary Research in the Digital Field
- Permanent connections with **public research institutes**: CNRS, INRIA, CEA, etc.
- **160 researchers**
- **Over 200 PhD students**
- **600 publications per year**
- **2 Laboratories**
 - **Interdisciplinary Institute of Innovation (i3)**: Social and economical sciences
 - **Informations Processing and Communication Laboratory (LTCI)**:
 - Signal, Image, 3D processing
 - Networks & Computer Sciences
 - Digital Communications & Electronics



6 Strategic Research Focuses



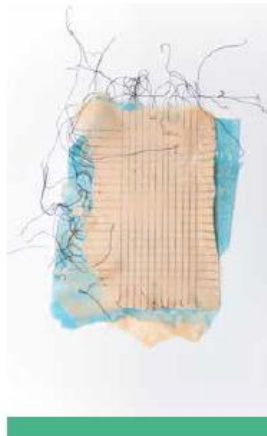
Very Large Networks & Systems

55 Permanent members
Membres permanents
206 Publications
Publications
23 Thesis
Thèses soutenues



Design, Interaction, Perception

17 Permanent members
Membres permanents
56 Publications
Publications
10 Thesis
Thèses soutenues



Digital Trust

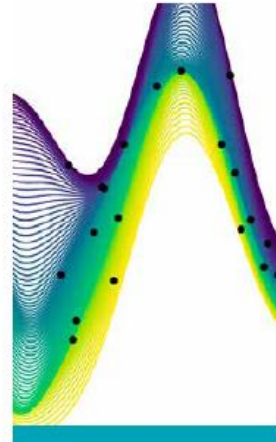
27 Permanent members
Membres permanents
71 Publications
Publications
9 Thesis
Thèses soutenues



Data Science & Artificial Intelligence

Sciences des données et intelligence artificielle

44 Permanent members
Membres permanents
227 Publications
Publications
24 Thesis
Thèses soutenues



Mathematical Modeling

3 areas

- > Content, knowledge and interactions
- > Networks and systems
- > Information and its ecosystems

Axe transverse

Modélisation mathématique

3 domaines

- > Contenus, connaissances et interactions
- > Réseaux et systèmes
- > L'information et ses écosystèmes



Digital Innovation

- 4** Joint laboratories
2 Research chairs
1 Startup incubator
1 SME Builder

Axe transverse

Innovation numérique

- 4** Laboratoires communs
2 Chaires de recherche
1 Incubateur de startup
1 accélérateur de startup





Engineering Double Degree Program

A unique and customized training
The French “*Grandes Ecoles*” engineering model



A Unique Training Program

Scientific excellence

- *In Mathematics, Physics, Electronics and Computer Science - Highly selective entrance exam - high level professor-researchers – Recognized outstanding research*

Multidisciplinary approach

- *Social sciences, economics, culture, management, law courses – small groups*

Business orientation

- *Seminars on digital careers and fields, case studies, research chairs, internships, professional skills & methods, active alumni network, etc.*

Innovation focused

- *Innovation facilities – entrepreneurship courses, innovation and research projects – interactions between labs and company R&D centers - incubators*

International openness

- *45% international students on campus - 2 foreign languages – studies abroad*



3 Major Profiles of Engineers

INVENTORS

Thanks to Excellence in Scientific Teaching:



Serge ABITEBOUL (77)
Sciences 'Académicien'



Vincent DUREAU (84)
TV technology for Google



Luc JULIA (95)
SIRI technology for Apple

ENTREPRENEURS

Thanks to an Innovative, Interactive and Project-based Pedagogy:



Céline LAZORTHES (08)
Leetchi Founder



Oscar SALAZAR (06)
UBER co-founder



Jean-Luc VAILLANT (90)
LinkedIn co-founder

TRANSFORMERS

Thanks to Economics & Digital Social Sciences Teaching:

Digital transformation
of companies



Elodie PERTHUISOT-ZIEGLER (01)
Executive Director E-commerce & marketing, Carrefour

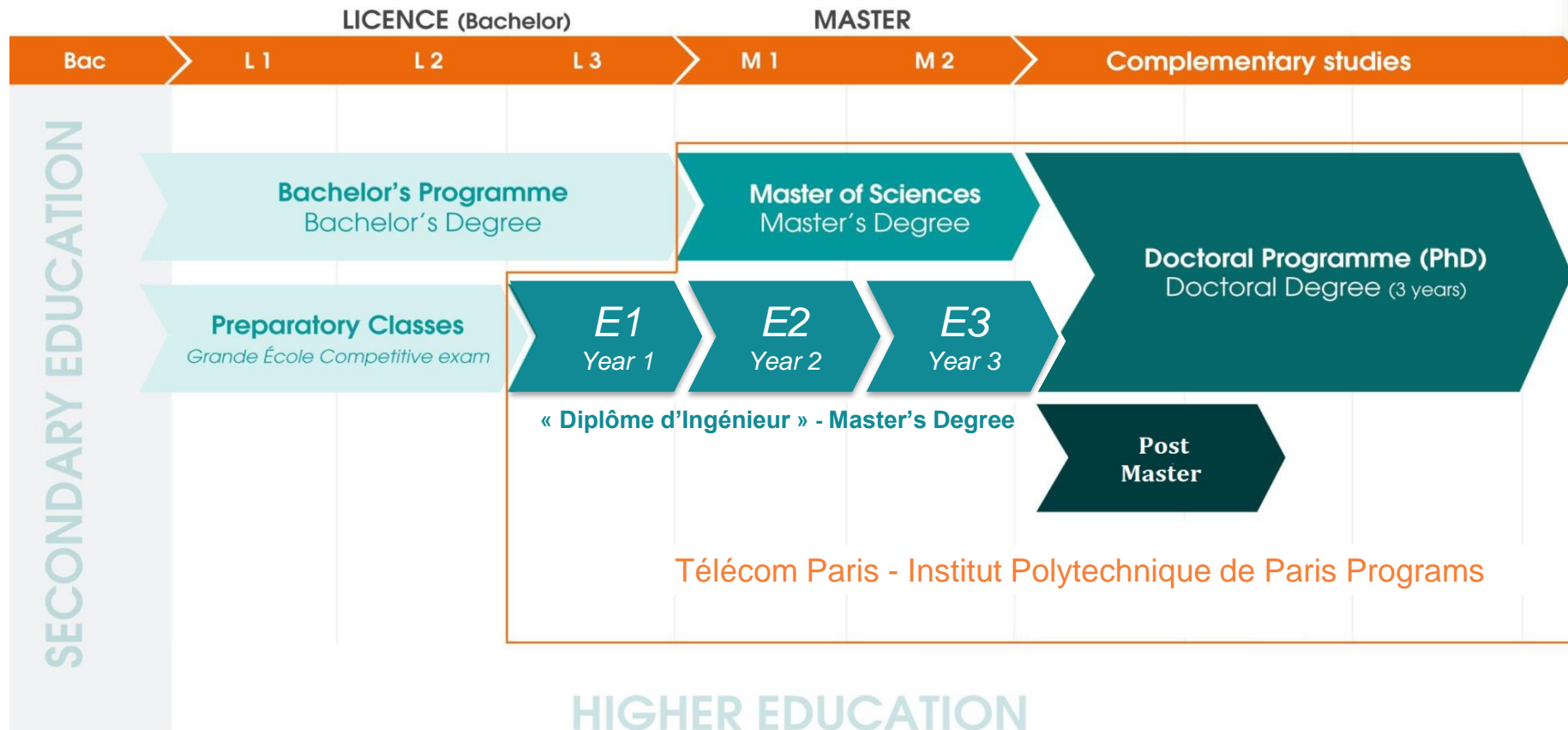


Jean-Christophe LALANNE (83)
CIO, Air France-KLM



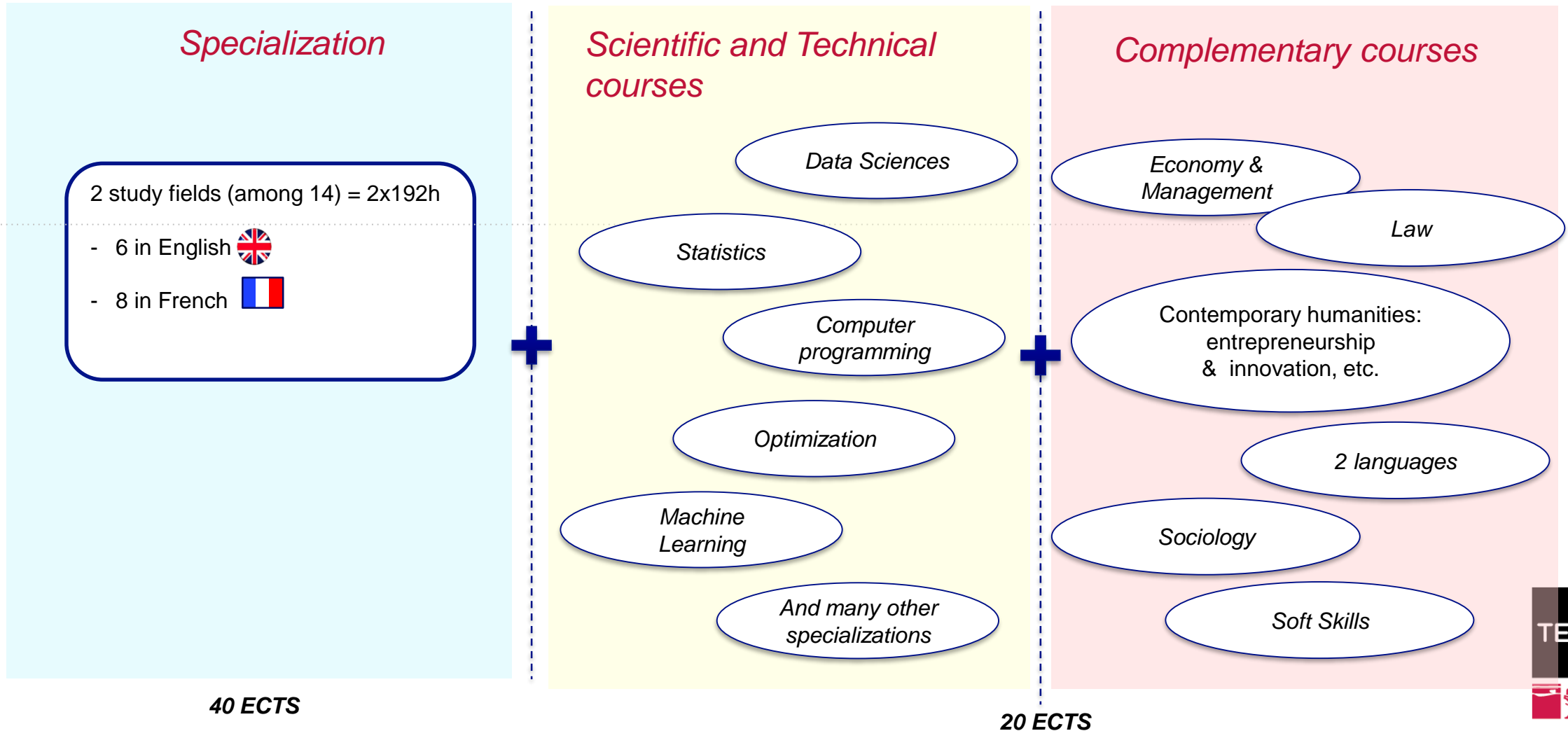
Yves TYRODE (91)
Digital Officer, BPCE

When Do You Enter the Curriculum?



Year 2: a tailor-made Program

2 semesters



14 Study Fields (2 Choices) – Year 2

AI & Data Sciences



Data Science (SD)



Signal Processing for Artificial Intelligence (TSIA)



Image (IMA)

Mathematics & Computer Sciences



Stochastic processes and scientific computing (MACS)

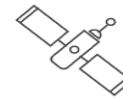


Applied algebra, Cryptography, Quantum information, Coding theory (ACCQ)



Mathematics, Theoretical Computer Science & Operation Research (MITRO)

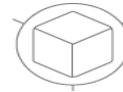
Computer Systems, Interactive and Embedded



Embedded Systems (SE)



Distributed Software Systems (SLR)



3D & Interactive systems (IGR)

Networks, Communications & Cybersecurity



Large Digital Infrastructure (GIN)



Infrastructures and Networks Security (SR2I)



Wireless networks and IoT (RIO)



Telecommunications: data to systems (TELECOM)

Economics & Digital Innovation



Markets, Organization, Data, Strategies (MODS)



Year 3: Career Preparation Options

*Télécom Paris Technological innovation
(internal option) – 30 ECTS (1 semester)*

1 study field - 12 ECTS
+ a "PRIM" Research & Innovation Projet - 12 ECTS
+ complementary elective courses (sciences, languages, humanities, etc.)

Areas:

- Artificial Intelligence, Image and Data Sciences
- Fundamentals of Mathematics and Computer Science
- Networks, IOT and Cybersecurity
- Digital systems
- Innovation

OR

Partnership Master 2 - 30 ECTS

DUAL DEGREES: 3 DIPLOMAS



6-month paid internship in France
30 ECTS (1 semester)





Engineering Exchange Program

A vast choice of study fields



Exchange Programs

- 1 or 2 semesters (30 or 60 ECTS)
- Fall & Spring semesters
- Fields
 - Artificial Intelligence and Data Sciences
 - Fundamentals of Mathematics and Computer Science
 - Economics and Social Sciences
 - Networks, Communications and Cybersecurity
 - Digital Systems
- Choice of courses: [Exchange courses catalogue](#)



Admissions
Tuition Fees & Living costs
Scholarships
Accomodation
Campus Life



Admissions



■ Requirements

- A scientific Bachelor's Degree or 1st year Master's degree
- Languages:
 - A minimum B1 acquired level for **French**-taught study fields: DELF or DALF certificates
 - A minimum B1 acquired level for **English**-taught fields: Cambridge First Certificate, Cambridge Advanced & Proficiency test, TOEFL IBT, IELTS
- **Nomination** by your home university's international coordinator

■ Identify your study fields for your [Exchange program](#) or [Double Degree program](#)

■ Send application files to: incoming@telecom-paris.fr before May 7th

- ✓ Engineering degree application form
- ✓ Learning agreement (for Erasmus students)
- ✓ Motivation letter
- ✓ Curriculum vitae
- ✓ Official transcripts of records from at least the last 3 years
- ✓ A copy of your passport or identity card
- ✓ At least 2 recommendation letters
- ✓ Copies of French language and/or English language certificate(s)

In English or French

Double Degree Fees



■ Tuition fees

- European students: **€2,650*** per year
- Non-European students: **€4,150*** per year
- Real cost supported by the French Government: €17,000 per year

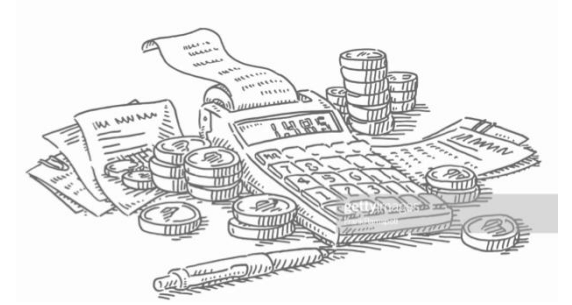
■ Partnership tuition fees

■ Student and Campus Life Contribution (CVEC): €92*

CVEC is collected to promote social, health, cultural and sports support and assistance for students - <https://cvec.etudiant.gouv.fr/>

*2020/2021 Fees

Average Living Costs

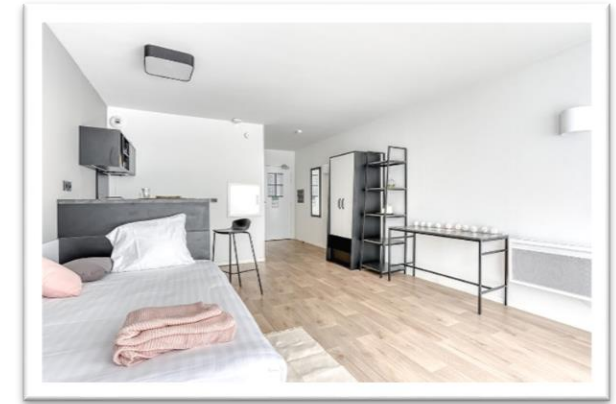


■ Average living costs in Paris: ~ €900 / month

- Accommodation: ~ €500 / month
- Public transportation card: €38 / month (annual student pass)
- Complementary Healthcare: from €10 /month
- A meal at the school cafeteria: ~ €3
- Telecommunications: from €2 / month

Accommodation

- **Located on campus, in the cities nearby and in Paris**
 - Look at the map on our [website](#) to locate various options
 - Budget: from 350€ to 800€ a month
 - Possibility of an accommodation allowance
 - Dedicated assistance team to be contacted on logement@telecom-paris.fr
- **Apply through the one-stop-shop [“Guichet Unique Paris Saclay”](#)**
 - Affordable rentals (~400€), close to the campus
 - Partnerships: allocated rooms for Télécom Paris students
 - Applications in June
- **Apply to other private or public (Crous) housing**
 - Cité Universitaire in Paris, accessible by train
 - Other partnerships (listed on our website)
- **A room in a private home through “Sciences Accueil”**
 - Near the campus or in Paris / + Administrative assistance



A Lively Campus Life

Culture & Music:

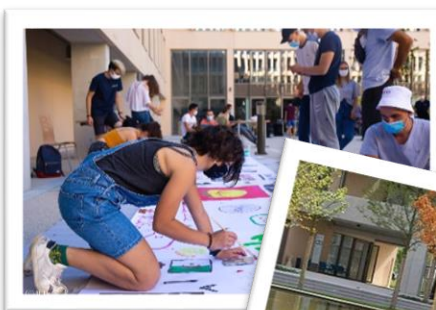
- ✓ Theater,
- ✓ Photos, videos
- ✓ Orchestra,
- ✓ Salsa,
- ✓ Télécom Sound & Magic,
- ✓ etc

Student Union:

- ✓ Integration activities, Ski Weekend, etc.
- ✓ Coordinates all clubs and association activities
- ✓ Buddy program by senior students

Sports:

- ✓ One dedicated afternoon per week
- ✓ Organized by Bureau des Sports (BDS)
- ✓ 15 disciplines: sailing, badminton, handball, tennis, volleyball, gym, rugby, etc.
- ✓ Access to numerous sport facilities on the campus



Activities on Campus



- ✓ Over 40 clubs and associations
- ✓ A large variety of festive activities: French regional cuisine day, international food forum, contests, etc.

- ✓ A few positions are recognized through the ECTS credit system
- ✓ Sustainable development: Make a Difference
- ✓ Business world: Télécom Étude, Télécom Paris Forum
- ✓ Digital technologies: Student Network (Rezel), Telecom Robotics, Programming club, etc.



Need more information?

■ Visit us

- www.telecom-paris.fr
- Facebook, Twitter, YouTube

■ Contact us

- Information: international@telecom-paris.fr
- Enrolments: incoming@telecom-paris.fr



TELECOM
Paris

